

# digifobpro



## CONTENT OVERVIEW

- ⇒ digifobpro - Getting Started
- ⇒ digifobpro Functions
- ⇒ Downloading Driver and Vehicle Unit Data
- ⇒ PC Software Installation
- ⇒ Connecting to your PC
- ⇒ Data Retrieval and Archiving
- ⇒ Drivers' Hours Rules Covered



Stoneridge Electronics Ltd,  
Claverhouse Industrial Park,  
Dundee DD4 9UB

Tel: +44 (0)1382 866 400  
Fax: +44 (0)1382 866 401  
E-mail: [amsales@stoneridge.com](mailto:amsales@stoneridge.com)

6150-101

**USER MANUAL**



## 5 EU Drivers' Hours Rules covered by digifobpro

Digifobpro provides analysis of Driver Cards both in its Quick View and Driver Card - Download features (see 'digifobpro Functions' [page 5](#)). There follows a list of the information provided by the digifobpro in relation to Driver's Hours.

CATEGORY	DESCRIPTION
<b>INFORMATION</b>	
LAST ACTIVITY	DISPLAYS WORK, DRIVE OR AVAILABLE AND THE DURATION. THE DATE/TIME DISPLAYED REFERS TO WHEN THE ACTIVITY STARTED.
NEXT DAILY REST	ADVISES THE DATE/TIME THAT THE NEXT DAILY REST IS DUE BY TAKING INTO ACCOUNT ANY DAILY REST REDUCTIONS.
LATEST SHIFT	A SUMMARY OF THE LAST SHIFT SHOWING WORK, DRIVE AND AVAILABLE DURATIONS. A SHIFT IS DEFINED AS THE PERIOD FOLLOWING THE LAST DAILY REST.
LATEST DAILY REST	SHOWS THE DURATION AND DATE AND TIME THE DAILY REST STARTED.
WEEKLY REST	DISPLAYS THE START DATE/TIME OF A CONTINUOUS PERIOD OF REST GREATER THAN 24 HOURS AND LESS THAN 7 DAYS AND ITS DURATION.
SUMMARY W/C	WEEKLY SUMMARY; A SUMMARY OF WORK, DRIVE AND POA FOR A 1 WEEK PERIOD. DATE SHOWS THE WEEK START.
PERIOD OF INACTIVITY	A PERIOD OF INACTIVITY OF 7 OR MORE DAYS. THE DATE/TIME DISPLAYED REFERS TO THE START OF THE PERIOD.
<b>INFRINGEMENTS</b>	
DRIVING BREAKS	INSUFFICIENT BREAK(S) TAKEN IN DRIVING OF 4HRS 30MINS OR MORE. DATE/TIME REFERS TO THE START OF A PERIOD OF DRIVE WHICH FOLLOWED A VALID BREAK OR DAILY REST.
INSUFFICIENT DAILY REST	THE DATE/TIME DISPLAYED REFERS TO THE START OF THE RELEVANT SHIFT.
INSUFFICIENT DAILY REST DUE TO MORE THAN 3 REDUCTIONS	DAILY REST HAS BEEN REDUCED MORE THAN 3 TIMES BETWEEN WEEKLY RESTS. THE DATE/TIME DISPLAYED REFERS TO THE START OF THE RELEVANT SHIFT.
DAILY DRIVE LIMIT	THE DAILY DRIVING LIMIT OF 9 HOURS (10 HOURS IF AN EXTENSION IS AVAILABLE) HAS BEEN EXCEEDED. THE DURATION IS DISPLAYED.
DAILY DRIVE LIMIT EXCEEDED DUE TO MORE THAN 2 EXTENSIONS	THE DAILY DRIVING LIMIT HAS BEEN EXTENDED TO 10 HOURS MORE THAN 2 TIMES IN THE CURRENT CALENDAR WEEK. THE DATE/TIME DISPLAYED REFERS TO THE START OF THE LAST SHIFT.
WEEKLY REST	INSUFFICIENT REST IN 6, 24 HOUR PERIODS FOLLOWING THE PREVIOUS WEEKLY REST. DATE/TIME SHOWS THE START OF THE 6 PERIODS.
WEEKLY DRIVING	MORE THAN 56 HOURS OF DRIVING HAS BEEN RECORDED IN A CALENDAR WEEK. DATE SHOWS THE WEEK START.
FORTNIGHTLY DRIVING	MORE THAN 90 HOURS OF DRIVING HAS BEEN RECORDED IN 2 CALENDAR WEEKS. DATE SHOWS THE FORTNIGHT START.

## 4 Troubleshooting

---

### 4.1 digifobpro - Complete Reset

If your digifobpro stops responding completely it is possible to reset the device by holding down the Return button for 5 seconds. Do not use this option as a regular feature especially if a firmware upgrade is in process as it is equivalent to removing the power from the battery momentarily.

### 4.2 Firmware Upgrade Failure

If for some reason a firmware upgrade is unsuccessful it is possible to return to the previous firmware stored on the device. First turn the digifobpro OFF. With the unit now off, hold down the UP arrow and keep it held down. Now press the OK button at the same time. Press OK when prompted to do so. The digifobpro will now restore the former firmware. This option should only be used as a last resort.

## TABLE OF CONTENTS

<b>1 digifobpro - Getting Started</b>	<b>4</b>
1.1 Components	4
1.2 Charging the Device	4
1.3 Controls	4
<b>2 digifobpro Functions</b>	<b>5</b>
2.1 Driver Card: Driver Card: Quick View, Download, File Viewer, Filtering	5
2.2 Vehicle Unit: Quick View, Download, File Viewer	6
2.3 Connect	8
2.4 Speed Trace Navigation	8
2.5 Maintenance	9
2.6 Power Off	9
<b>3 digiConnect Windows® Software – V3.00 onwards</b>	<b>10</b>
3.1 Minimum Recommended PC Specification	10
3.2 Installing the digiConnect Windows® Software	10
3.3 Connecting the digifobpro to your PC	11
3.4 Accessing the Functions Menu on your PC	12
3.5 File Management	12
3.6 Configure Device	14
3.7 Upload Firmware	15
3.8 Open Archive Folder	16
3.9 Information on TREPs	17
<b>4 Troubleshooting</b>	<b>18</b>
4.1 digifobpro – Complete Reset	
4.2 Firmware Upgrade Failure	
<b>5 EU Drivers' Hours Rules covered by digifobpro</b>	<b>19</b>

# 1 digifobpro - Getting Started

## 1.1 Components

- Digifobpro
- Vehicle Unit Cable
- USB Converter/digiDock
- USB Cable
- Power adapter with UK and Euro connectors

## 1.2 Charging the Device

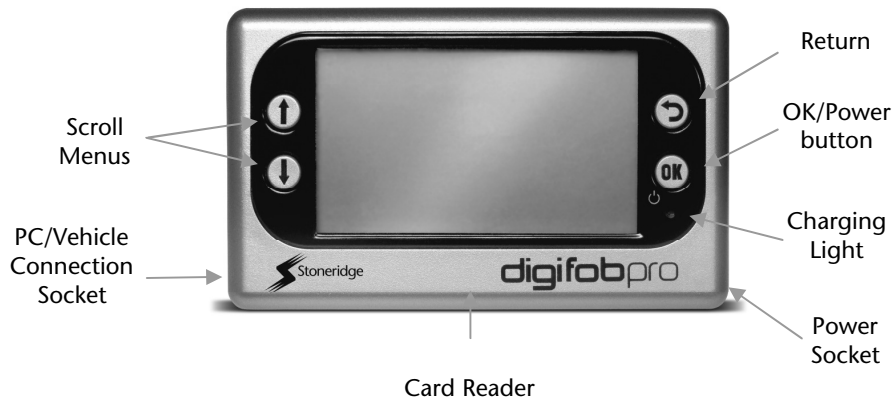
Digifobpro is supplied with a UK and Euro adapter. Select the appropriate plug adapter for your region and insert it into the power unit.

Once the Power Adapter is plugged into the mains supply you can insert the small single pin connector into the right hand side of the digifobpro (see 'Controls' below).

A red charging light is displayed in the unit when charging correctly. When the unit is fully charged the charging light will change to green. Be aware that the first charge may take several hours.

Battery life will be in excess of 20 hours in constant use (20mA consumption with a 700 mAh battery rating) however the default power save features of the digifobpro will help to extend the battery life considerably in normal use.

## 1.3 Controls



3. Choose the location in which you wish to store your Driver Card and Vehicle Unit files when they are downloaded from the digifobpro.
4. If you tick the 'Place downloaded files into the sub-folder of the Driver or Vehicle' option, whenever Driver Card files or Vehicle Unit files are downloaded from digifobpro they will automatically be sorted into separate directories by driver name or vehicle registration number.
5. By choosing the 'Manual' option you will have total control over what it is you download from the digifobpro. In this mode you will have to browse to the digifobpro and copy files manually using the supplied software.

### Card Reader:

digiConnect will support most standard card readers and the Tachosys digiCard. This allows you to upload Driver Cards directly into the digiConnect default Archive Folder.

## 3.9 Information on TREPS

Whenever you reference Vehicle Unit file data on the digifobpro we refer to the term TREPS (transfer response parameters). A definition of each of the TREPS is listed in the table below.

TREP 1	<b>Overview:</b> includes data such as vehicle ID, last VU download and card type.
TREP 2	<b>Activities:</b> shows all tachograph recordable actions performed in the truck by a driver or other card holder. Does not include faults.
TREP 3	<b>Events and faults:</b> all faults recorded on the tachograph including overspeeds, power interruptions and time adjustments.
TREP 4	<b>Detailed speed:</b> truck speed is recorded every second the truck is moving. There is a limit of 24 hours of data.
TREP 5	<b>Technical data:</b> details relating to the vehicle unit identity, software version and calibration.

### 3.8 Open Archive Folder

This option allows you to quickly navigate to the Driver Card and Vehicle Unit file archive directory.

#### *digicentral Settings:*

Tachosys devices can send data straight to your analysis provider. Ask your provider if they provide support for this service.

#### *Options:*

This area allows you to define file locations, whether you want automatic or manual downloading from the digifobpro and card reader settings.

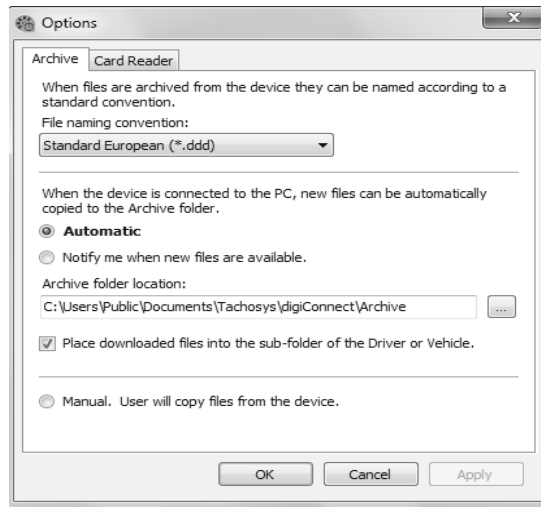


Fig 9.

You may change the Driver Card and Vehicle Unit file naming conventions to suit your country or analysis software. Simply select the most appropriate option from the drop down menu in software options (see Fig 9.).

#### *Archive Settings:*

1. Select the Archive tab at the top of the pop up window (see Fig 9.).
2. Choose whether you want 'Automatic' download of files from your digifobpro or whether you wish to be notified of new files when the unit is connected to your PC. By selecting Automatic each time your digifobpro is connected to your PC any files that are not already on your PC which exist on the unit will be downloaded automatically. A small window at the bottom right of your screen will indicate the progress when automatic transfer occurs.

## 2 digifobpro Functions

To turn the digifobpro ON, hold down the OK button for approximately 2 seconds.

To turn digifobpro OFF scroll using the UP and DOWN arrows to the 'Power Off' option listed in the units Main Menu. Digifobpro will automatically switch itself off if no activity is detected for a number of minutes.

### 2.1 Driver Card: Driver Card: Quick View, Download, File Viewer, Filtering

Press the OK button whilst on this menu option.

**Quick View:** press the OK button whilst 'Quick View' is highlighted and you will be prompted for a Driver Card. The Driver Card will now be analysed against the EU Drivers' Hours Rules. A filter screen allows you to choose which elements of the analysis you wish to view (see 'Filtering' below). Scroll through the data using the UP and DOWN arrows. Approximately one months worth of data is taken from the card. The number of records to scroll through is indicated in the bottom right corner.

**Download:** press the OK button whilst the 'Download' option is highlighted and you will be prompted for a Driver Card. Digifobpro will read the full contents of the card and commit it to its internal memory. At the same time digifobpro produces an analysis of the Driver Card against EU Driver's hours rules. A filter screen allows you to choose which elements of the analysis you wish to view (see 'Filtering' below). You can scroll through the analysis using the UP and DOWN arrows. The analysis is stored within digifobpro so you can recall it at any time.

**File Viewer:** To view the analysis of Driver Card files stored on the digifobpro press the OK button whilst the 'File Viewer' option is highlighted. Scroll through the files stored using the UP and DOWN arrows. When you find the file you want press the OK button; you may choose Analysis or Raw data. Within analysis a filter screen allows you to choose which elements of the analysis you wish to view (see 'Filtering' below). Raw data allows you to scroll every day on the card, press OK to drill into the days data and UP and DOWN to view the records.

**Filtering:** The data is split into categories; Information, Infringement, Summary and Latest. Turn ON or OFF options by highlighting using the UP and DOWN arrows and turning an option ON or OFF with the OK button. In the case of the Download and File Viewer options you can specify a time period in weeks by highlighting the 'Weeks' option and pressing OK, use the

UP and DOWN arrows to increase or decrease the number of weeks and then press OK. Now highlight SHOW and press OK. You can revise your settings by pressing the RETURN button. Your settings are saved for next time.

## 2.2 Vehicle Unit: Quick View, Download, File Viewer

You must use the cable provided to connect the digifobpro to your Vehicle Unit. The cable has the same connector at both ends and it does not matter which end you place in the digifobpro or the Vehicle Unit. Refer to your vehicle's Tachograph instructions for details on where the download connection is located.

**Quick View:** press the OK button whilst 'Quick View' is highlighted and you will be presented with three options;

1. Events and Faults
2. Overspeeding
3. Speed Trace

Highlight an option by using the UP and DOWN arrows and press OK. All of the available data from the Vehicle Unit is downloaded for each of the three options. See 'Speed Trace Navigation' on [page 8](#) for more information on how to use this feature.

The Events and Faults option has a filter screen which allows you to choose which elements you wish to view. The filter options are as follows;

1. General Events
2. VU Security
3. Sensor Security
4. Equipment Faults
5. Other Faults

Council Regulation (EC) No. 2135/98 and its Annex 1 (B) sets out exactly which faults and events should be recorded by a Vehicle Unit. In essence the nature of the data recorded within these categories may help to identify tampering with either the tachograph unit or its sensors or may help to diagnose a fault within the tachograph or sensors. The list of possible faults is extensive and they have therefore been grouped into the categories provided. You may wish to refer to Annex 1 (B) or your Tachograph user guide for further information on Events and Faults.

You may include an option by highlighting it using the UP and DOWN arrows and turning the option ON or OFF with the OK button. Now highlight SHOW and press OK. You can revise your selections by pressing the RETURN button. Your settings are saved for next time.

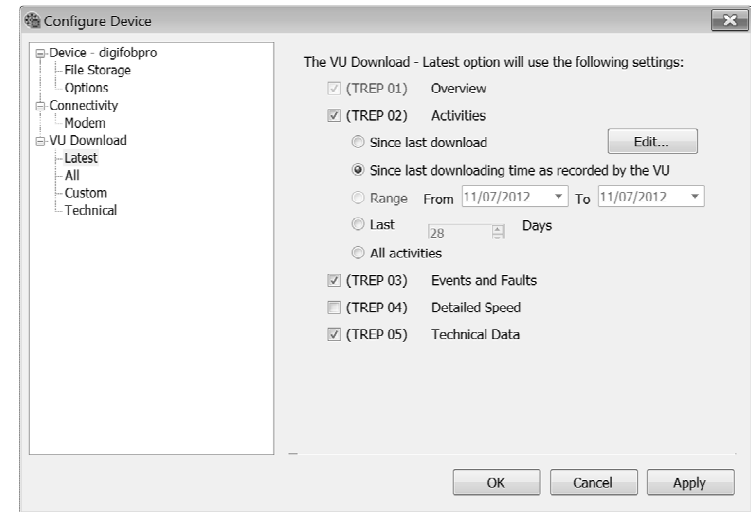


Fig 7.

## 3.7 Upload Firmware

From time to time firmware updates will be made available for your digifobpro.

Select the 'Upload Firmware File' option and the Windows® explorer window will open. Select the firmware upgrade file that you will have downloaded from the Internet or been supplied by your retailer.

Once you select a file it will be automatically uploaded to the digifobpro using the steps shown in Fig 8. The firmware is actively installed and the digifobpro restarted in connect mode. If the firmware upgrade should fail for any reason please refer to Troubleshooting on page 18.

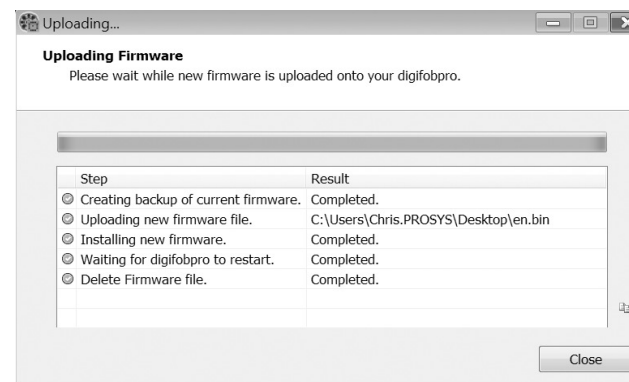


Fig 8.

### 3.6 Configure Device

This option allows you to configure all attributes of the digifobpro (see Fig 6). Under 'Device' you can view the units; Version, Serial and Build Date. Here you can also set your time zone by picking the most appropriate option from the drop down provided. If you have the optional printer available for the digifobpro you can enable it within the same window by ticking the 'Enable digifobpro printer' option.

Click on the appropriate option that is listed below 'VU Download' (see Fig 7. on [page 15](#)) to set your TREP download requirements (see 'Information on TREPS' [page 17](#)) and number of days of activity you require for each of the options; Latest, All and Custom. Click 'Apply' and the settings will be written back to your digifobpro ready for the next Vehicle Unit download.

The 'Power Save' option allows you to set how long the digifobpro will remain on if it senses no activity.

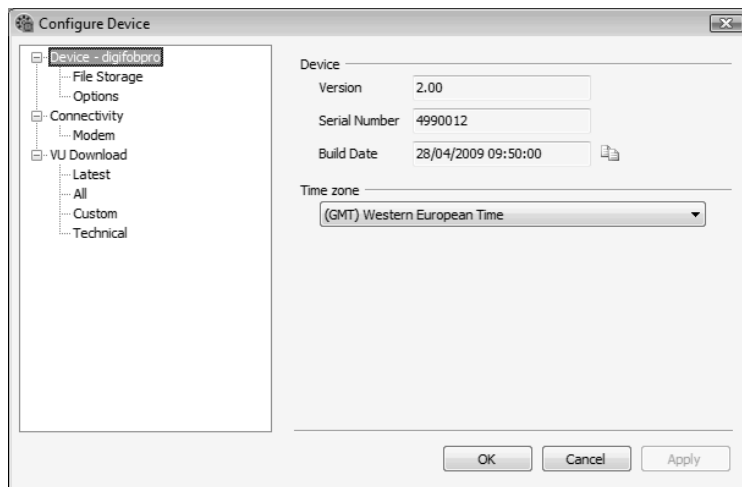


Fig 6.

The Custom options can be set up within digiConnect or on the digifobpro. On the digifobpro scroll each TREP using the UP and DOWN arrows and toggle each option ON/OFF using the OK button. TREP 2 allows you to set the number of days required. Scroll to the TREP 2 option and press OK, you may now use the UP and DOWN arrows to increase or decrease the number of days, scroll one less than 000 to choose ALL days. Press OK to accept the setting. Finally scroll to the DOWNLOAD option and press OK to download.

**Download:** press the OK button whilst the 'Download' option is highlighted and you will be presented with three options; Latest, All and Custom. The criteria for the Latest and All options is setup using the supplied digiConnect software. You must first connect the digifobpro to your PC (see 'Connecting the digifobpro to your PC' on [page 11](#)).

The Custom option can be set up within digiConnect or on the digifobpro. On the digifobpro scroll through each TREP (see [page 17](#) for more information on TREPS) using the UP and DOWN arrows and toggle each option ON/OFF using the OK button. TREP 2 allows you to set the number of days required. Scroll to the TREP 2 option and press OK, you may now use the UP and DOWN arrows to increase or decrease the number of days, scroll one less than 000 to choose ALL days. Press OK to accept the setting. Finally scroll to the DOWNLOAD option and press OK to commence downloading.

Please note the Digifobpro turns itself OFF when there is no activity for a few minutes. This may mean that when you return to the unit it is OFF. If you were downloading at the time, when you turn the unit on it will display the 'Last Message' which will indicate the success or failure of the download.

**Download Speed:** refers to the speed of the download; Optimised is the fastest method. Should you have any download difficulties then revert to the Standard option.

**File Viewer:** press the OK button whilst the 'File Viewer' option is highlighted and you will have the option of scrolling through each of the Vehicle Unit files by using the UP and DOWN arrows. You can select a file by pressing the OK button this in turn gives you three options:

1. Events and Faults
2. Overspeeding
3. Speed Trace

Please note: File Viewer behaves exactly the same as the Quick View function within this section except that it relates to the Vehicle Unit file held on the digifobpro and not on the Tachograph.

See 'Speed Trace Navigation' on [page 8](#) for more information on how to use this feature.

Press the Return button the appropriate number of times to return to the Main Menu.

### 2.3 Main Menu - Connect

Press the OK button whilst the 'Connect' option is highlighted. You will receive a message 'Awaiting Remote'. The digifobpro is waiting to connect to your PC (see 'Connecting the digifobpro to your PC' on [page 11](#)).

### 2.4 Speed Trace Navigation

The Speed Trace is a chart which is displayed by the Main Menu - Vehicle Unit - Quick View - Speed Trace option and the Main Menu - Vehicle Unit - File Viewer option, provided that you have downloaded Trep 4 (Detailed Speed).

The Speed Trace initially displays a chart showing speeds within a 24 hour period represented by dots (see Fig 1.). At the top right of the digifobpro screen the highest speed in the period shown is displayed. Top centre of the screen is the date to which the graph corresponds. There are a number of navigation icons to the left of the screen (see below). You may scroll through these icons using the UP and Down arrows and select an icon with the OK button.

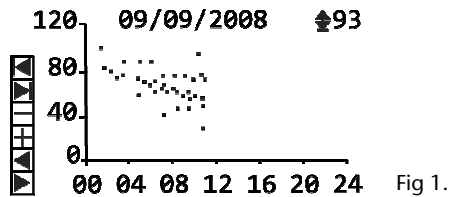


Fig 1.

Icon	Function within Speed Trace graph
	Navigates to an earlier day which has speed data available.
	Navigates to a later day which has speed data available.
	Zooms out one step from the current view. Steps are; 24 hours, 8 Hours, Single Hours, Minutes, Seconds.
	Zooms one step into the current view. Steps are; 24 hours, 8 Hours, Single Hours, Minutes, Seconds.
	Shifts to the left effectively moving back in time for the day.
	Shifts to the right effectively moving forward in time for the day.

**File Types:** A summary of the quantity of files by type is shown in the File Types section. You can click on 'Driver Card' or 'Vehicle Unit' to restrict the file list to a particular type.

#### File Management:

**Upload:** Allows you to upload files from your PC's hard drive to the digifobpro's internal memory. Please bear in mind that the digifobpro is designed for the storage of Driver Card and Vehicle Unit files. It is not an appropriate medium for the mass storage of other files.

**Download:** You can highlight any file in the file window and click 'Download'. This will prompt you for a location and file name in which to save the file.

**Download New:** When a file is downloaded from the digifobpro it is updated on the digifobpro with a status of 'Archived'. This feature allows the system to identify which files have been downloaded (archived) and which have not. The 'Download New' feature will only be active when Automatic Downloading is turned off.

**Delete:** Allows you to highlight a file in the main window and click 'Delete'. This will permanently remove the file from the digifobpro. This option must be used with care as the file will be deleted permanently.


**Delete All:** This option will permanently delete all files from the digifobpro. This option should be used with caution.

**Properties:** Will show the properties of any highlighted file. Here you can change the 'Archive' properties of a file. If you deselect 'Archived' and 'Archived Remotely' next time you connect the digifobpro to your PC this file will be automatically downloaded provided that archiving is set to automatic (see 'Options' [page 16](#)). This is particularly useful when files have been lost on your PC or a download is interrupted part way through.

If you right click a file in the file browser main window you will see three options; Download, Delete and Properties. These options are exactly as defined above.



### 3.4 DigiConnect - Accessing the Functions Menu on your PC

To access all of the functions within your digiConnect PC software right click the digiConnect icon , visible in the right lower corner of your screen (in the system tray) . You must select the specific device from the top of the menu list as digiConnect V3.00+ supports multiple devices.

The icon may be hidden and will be revealed by clicking on the up arrow on the Taskbar, on the bottom right of your screen. Please bear in mind that if you have moved your Taskbar these instructions will need modifying accordingly. The digifobpro must be connected to your PC and be in connection mode for the functions menu to be activated (see 'Connecting the digifobpro to your PC' on [page 11](#)).

### 3.5 File Management

Digifobpro comes with its own file browser software to enable you to manage the files that are held on the digifobpro via your PC. This is particularly useful for where you have opted for Manual Download within the Archive Settings. Select the 'View Files on Device' option and you will be presented with the file browser screen as shown in Fig 5.

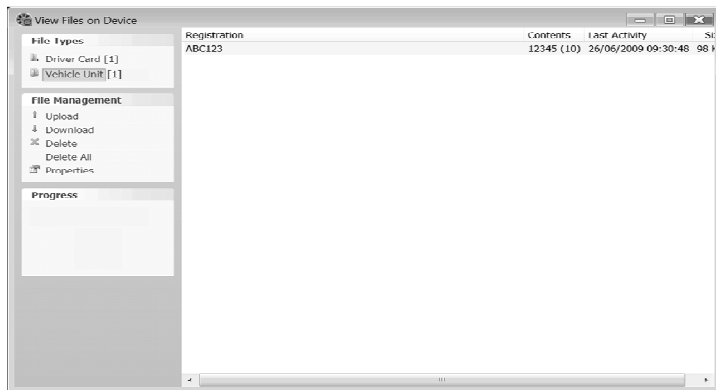


Fig 5.

Please note that any files that have been archived from the digifobpro to the PC will have an 'A' in the bottom left corner when you view them on the digifobpro screen.

### 2.5 Main Menu - Maintenance

**Delete file:** when you select this option by highlighting it and pressing the OK button you will be able to use the UP and DOWN arrows to scroll through the file contents on your digifobpro. If you press OK on any file you will receive the message 'Are you sure?'. If you click OK the file will be permanently deleted from the unit. Click RETURN to cancel the delete. You must use this option carefully.

**Delete all:** deletes all files from your digifobpro. Use this option with caution as if you have not downloaded files to your PC they will be permanently lost. You will receive a warning message before deletion occurs. If you wish to proceed you must use the UP and DOWN arrows to navigate to the OK option on screen and then press the OK button. To cancel this action, select the CANCEL option on screen using the UP and Down arrows and then press OK.

**Status:** displays the amount of storage space used on the device and the current battery status in volts.

**LCD Contrast:** vary the screen contrast by using the UP and DOWN arrows.

**About:** displays the software version number, language and serial number of the digifobpro.

### 2.6 Main Menu – Power Off

**Power Off:** highlight the 'Power Off' option by scrolling using the UP and DOWN arrows. Press OK and your digifobpro will turn off automatically. To turn the unit on hold the OK button for approximately 2 seconds.

### 3 digiConnect Windows® Software – V3.00 onwards

#### 3.1 Minimum Recommended PC Specification

Processor: Intel P4 1.4GHz, AMD Athlon 1.4 GHz  
Memory: 512Mbytes  
Hard disk: 40 Gbytes  
Video Resolution: 1024 x 768  
Operating Systems: Windows XP SP2 / Vista SP1 / Windows 7

In order to load the supplied software you must have a CD or DVD Drive. In order to connect the digifobpro to your PC you must have an available USB connection.

#### 3.2 Installing the digiConnect Windows® Software

**Important:** do not connect any of the cabling provided with the digifobpro before commencing the software installation.

1. Insert the CD provided into your optical disk drive. It will run automatically and a dialog box will appear. If the auto-run feature is disabled on your system the program will fail to load automatically. Please browse to the disk using Windows® Explorer and double-click Setup.exe.
2. You will be prompted for your appropriate language. Please select from the list and then click OK.
3. You will receive a welcome message, simply click 'next'.
4. Read the terms of the Licence Agreement then click on the 'I accept the terms in the Licence agreement' option and then click 'next'. If you choose to not accept the terms the installation will be terminated.
5. Choose the folder in which you wish the software program files to be installed. The default folder is the standard location for Windows® programs. Click 'next'.
6. Click 'Install' to begin the actual installation. This may take several minutes.
7. Finally tick or un-tick the box labelled 'Launch digiConnect' depending on whether you wish to start the program on completion of the installation. Click 'Finish'.
8. If you opted to launch digiConnect at the end of the installation then you will be taken to the main options menu to configure your individual settings.

Upon completion, you will see an icon of a wheel with a cross in it appear at the bottom right of your screen (system tray). A cross will be shown when the digifobpro is not connected. A green tick denotes that the digifobpro is successfully connected.



#### 3.3 Connecting the digifobpro to your PC

1. Connect the cable with connector as shown in Fig 2, to the PC/vehicle connection socket on the left side of the digifobpro. The other end of this cable can now be inserted into the digidock, shown in Fig 3.



Fig 2.

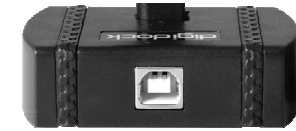


Fig 3.

2. Connect the standard USB cable supplied to a free USB socket on your PC. The end of the USB cable, as shown in Fig 4, should be connected to the digidock, shown in Fig 3.



Fig 4.

3. Ensure that the digiConnect software is started by selecting Programs–Tachosys - digiConnect on your PC.
4. Turn on your digifobpro by pressing and holding the OK button for at least 2 seconds.
5. By using the up or down arrow buttons on your digifobpro, scroll to the 'Connect' option and press the OK button. Your digifobpro should now say 'Connected'.

If your digifobpro does not say 'Connected' then do the following:

1. Check all of the cabling and ensure the connections are secure.
2. Repeat step 3 above.
3. Repeat step 4 above.
4. Repeat step 5 above.