



digiCentral Initial Setup

Description: digiCentral Initial Setup

Product: digiCentral Web

Table of Contents

1 – digicentral Overview	3
2- digicentral Account.....	4
3- Authenticate the Company Card	5
4- File Download Options.....	7
5- Summary	8

Stoneridge Electronics Ltd
Customer Support: +44 (0)1382 866302
Technical Support: +44 (0)1382 866356

Fax: +44 (0)1382 866341
Email: helpdesk@stoneridge.com
Web: www.optac.info

1 – digiCentral Overview

digiCentral is a web page which provides a central location for various devices to transmit the driver card and vehicle downloads to

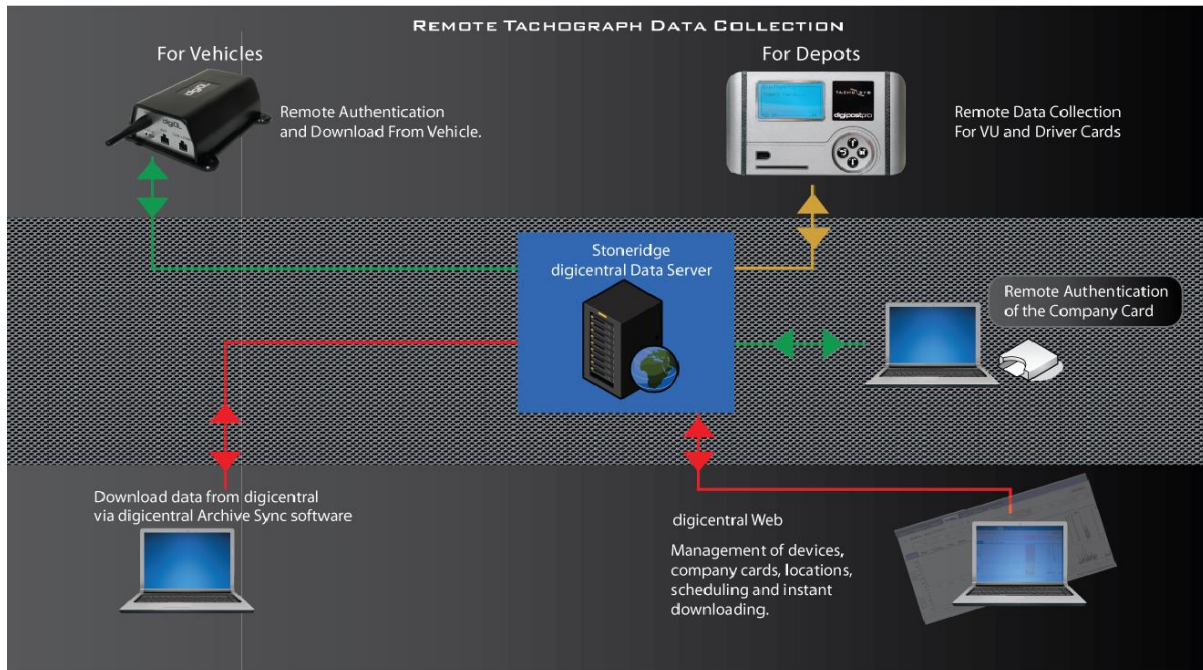


Fig. 1

The Stoneridge digiCentral site:

- Is accessible via the internet and is secured by login details. <http://dcsre.tachosys.eu>
- Has a customisable dashboard for alerts and download reminders.
- Has the ability to set schedules for remote downloads (using the digiDL).
- Contains downloadable software for use with digiCentral:
 - digiCentral Archive Sync – This software enables you to copy all the files stored by digiCentral onto your computer
 - digiCentral Authenticate – for authenticating the company card
 - digiConnect – for use mainly with the digifobpro
 - digifob Companion – for use with the new digifob device

Stoneridge Electronics Ltd
 Customer Support: +44 (0)1382 866302
 Technical Support: +44 (0)1382 866356

Fax: +44 (0)1382 866341
 Email: helpdesk@stoneridge.com
 Web: www.optac.info

2- digiCentral Account

Please check that you have received an email from Stoneridge Electronics with the following information:

- Account ID
- User
- Password

With this information, you will be able to log onto your digiCentral at <http://dcsre.tachosys.eu/>

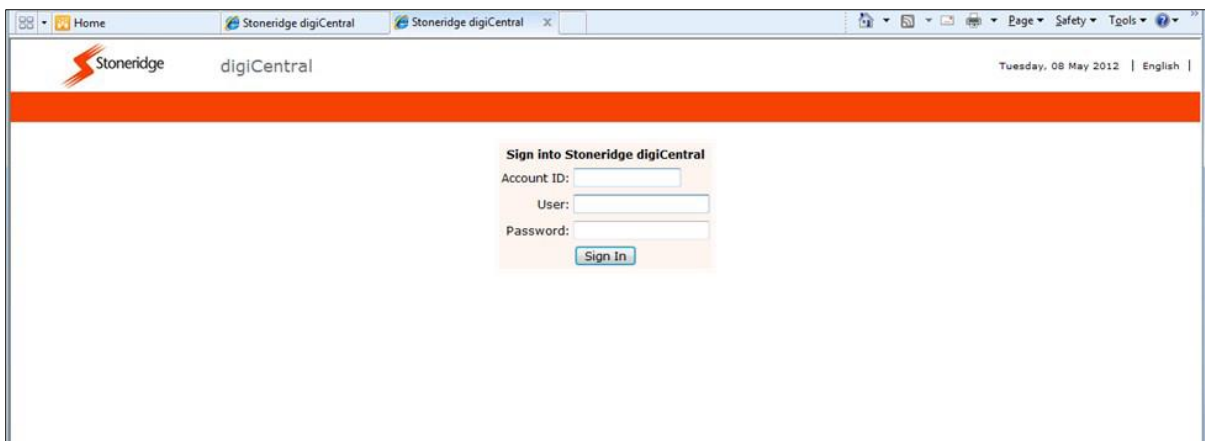


Fig. 2

Stoneridge Electronics will create and configure your account with the details provided in the “Customer Checklist” sent to us by your company. We will set up: locations, schedules, file forwarding and devices. At this point your company card will be registered but not authenticated; digiCentral Authenticate allows you to publish your Company Card online to facilitate the remote download of your vehicle(s) Digital tachograph.

Stoneridge Electronics Ltd
Customer Support: +44 (0)1382 866302
Technical Support: +44 (0)1382 866356

Fax: +44 (0)1382 866341
Email: helpdesk@stoneridge.com
Web: www.optac.info

3- Authenticate the Company Card

Please, check that you have your company card and a Smart card reader.

To authenticate remotely “digiCentral Authenticate” must be downloaded from the “Software menu item on the “My Account” tab of digiCentral.

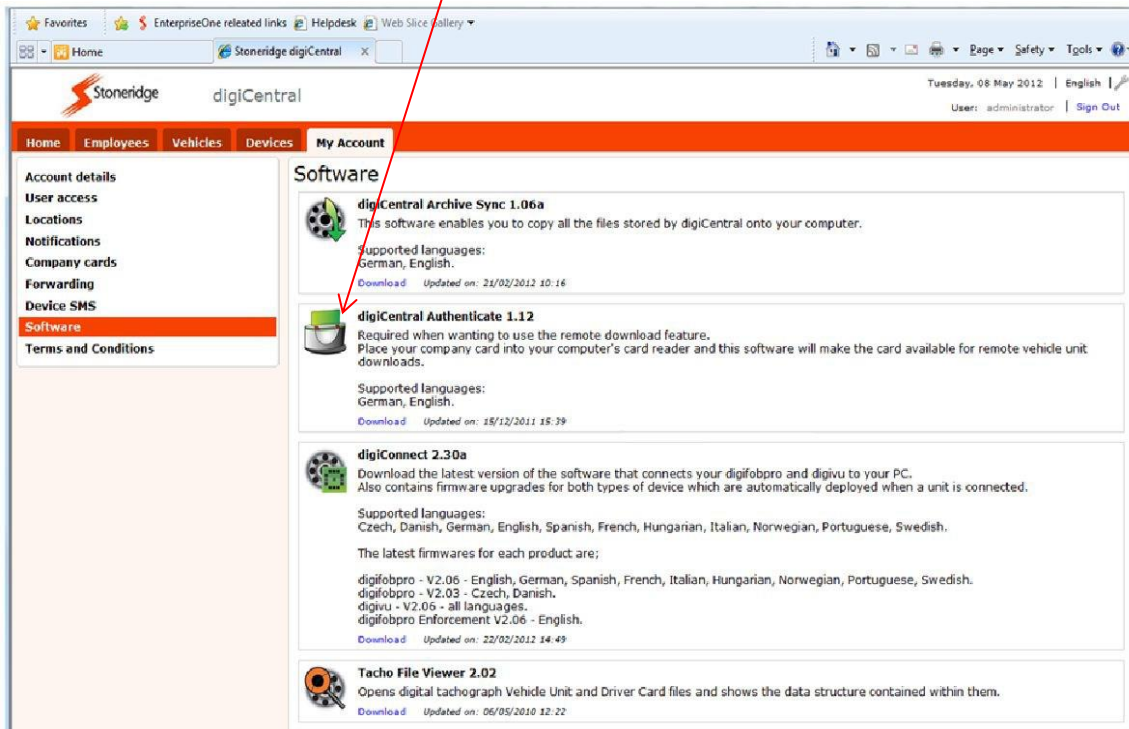


Fig. 3

This software must be installed on a server or a PC that is always on and connect to the internet.

Download the software by clicking the download button and follow the on screen instructions to install.

After installing you will need to add the company card to the system.

Adding the company card:

Insert the company card in a suitable smart card reader and plug into the PC/Server onto which you have installed digiCentral Authenticate.

Stoneridge Electronics Ltd
Customer Support: +44 (0)1382 866302
Technical Support: +44 (0)1382 866356

Fax: +44 (0)1382 866341
Email: helpdesk@stoneridge.com
Web: www.optac.info

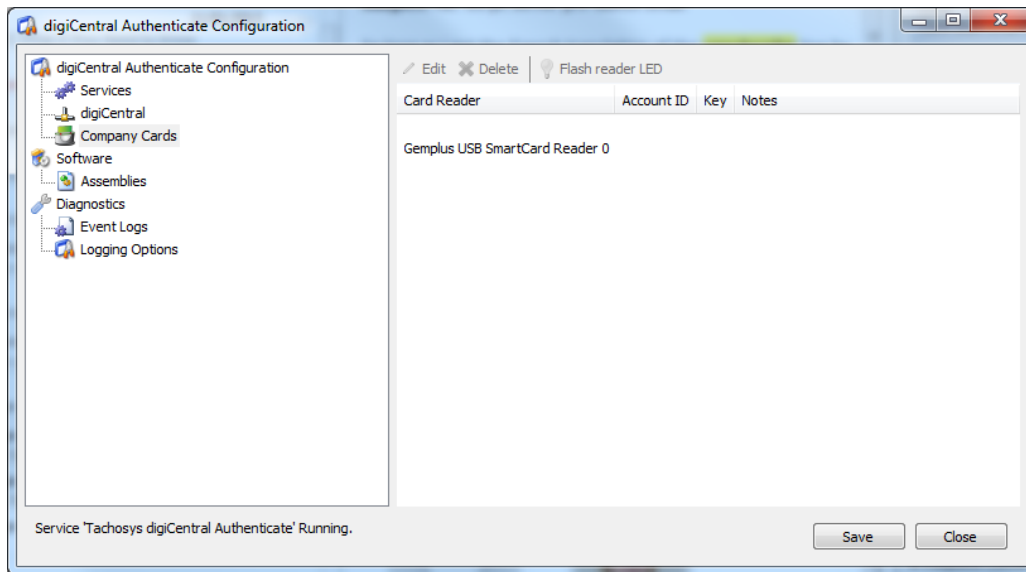


Fig. 4

.Open the software and click on “Company Cards”.

Click on the smart card reader and the click on the “edit” button.

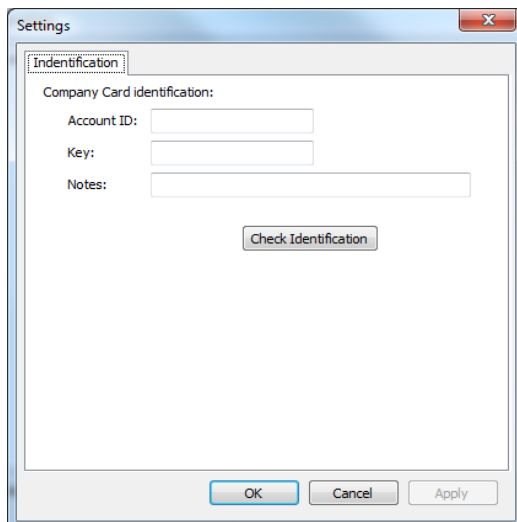


Fig. 5

Enter the digiCentral ID into ID field, this is the account ID that is used to log into digiCentral.

Enter the key that was previously generated when the company card was added to digiCentral. Click on the “Check Identification” button to verify that the supplied settings successfully connect to digiCentral.

Then click “OK”.

Stoneridge Electronics Ltd
Customer Support: +44 (0)1382 866302
Technical Support: +44 (0)1382 866356

Fax: +44 (0)1382 866341
Email: helpdesk@stoneridge.com
Web: www.optac.info

4- File Download Options

- **Do you use OPTAC3 Web?**

If you sent the 'order form' to Stoneridge Electronics with the correct information, your files will be downloading automatically to your OPTAC3 Web.

- **Do you use different software?**

In this case you will need to store the files in your computer. The tachograph files can automatically be downloaded to a PC connected to the internet using "digiCentral Archive sync" which can be downloaded from the software page on the "My Account" tab of the digiCentral. To install the "digiCentral Archive Sync" please refer to the manual located in the top right-hand corner of your digiCentral account.

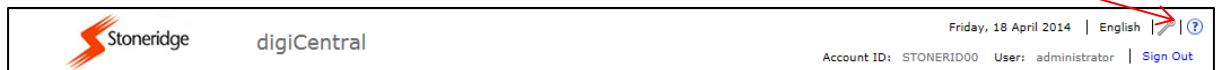


Fig.6

- **Do you want to manually download information from your digiCentral account to your PC?**

You can download manually vehicles and employees data from your digiCentral to your computer.

Click in 'Employees' or 'Vehicles' and select "Archive" on the left-hand menu, then select 'download'. You can then save the data to your PC.

Stoneridge Electronics Ltd
Customer Support: +44 (0)1382 866302
Technical Support: +44 (0)1382 866356

Fax: +44 (0)1382 866341
Email: helpdesk@stoneridge.com
Web: www.optac.info

5- Summary

Now your digiCentral is set up and you are ready to start downloading information.

Things to remember

- A valid company card which the vehicle has seen and is available online via digiCentral Authenticate. The digiCentral can provide automatic notifications, alerts for when the company card is not authenticated. These Notifications must be set up by the Administrator in 'My Account' option.
- You should not switch your PC off or disconnect your company card.
- A relationship between the company card and the vehicles created on digiCentral.
- The locations you define should then be set against each new or existing device. The vehicle and employee will be given the location set up by the device.
- You can save time by creating schedules for vehicle and driver downloads from within the location option.
- For a better understanding of the program, all the manuals can be accessed from the top right-hand corner in your digiCentral account. Please refer to the Admin and User manual to be able to:
 - Add another company card or edit existing details
 - Create and edit schedules.
 - Add additional devices.
 - Add and edit employees and vehicles.
 - Access to manuals and information.

Stoneridge Electronics Ltd
Customer Support: +44 (0)1382 866302
Technical Support: +44 (0)1382 866356

Fax: +44 (0)1382 866341
Email: helpdesk@stoneridge.com
Web: www.optac.info